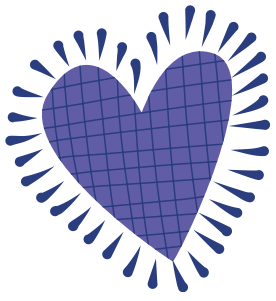


EXPRESSIONS OF LOVE



Loving relationships support:

- Growth
- Vulnerability
- Courage
- Mutuality
- Empowerment



PROTECTIVE

Discipline

Guidance

Structure

Provision

Protection

Safe enough

Respect

Power with not
power over

Capacity to represent
needs and feelings

NURTURING

Comfort

Development

Embrace

Support

Mirroring

Care

Growth

Kindness

Compassion

Openness to change

Presence

Responsiveness

